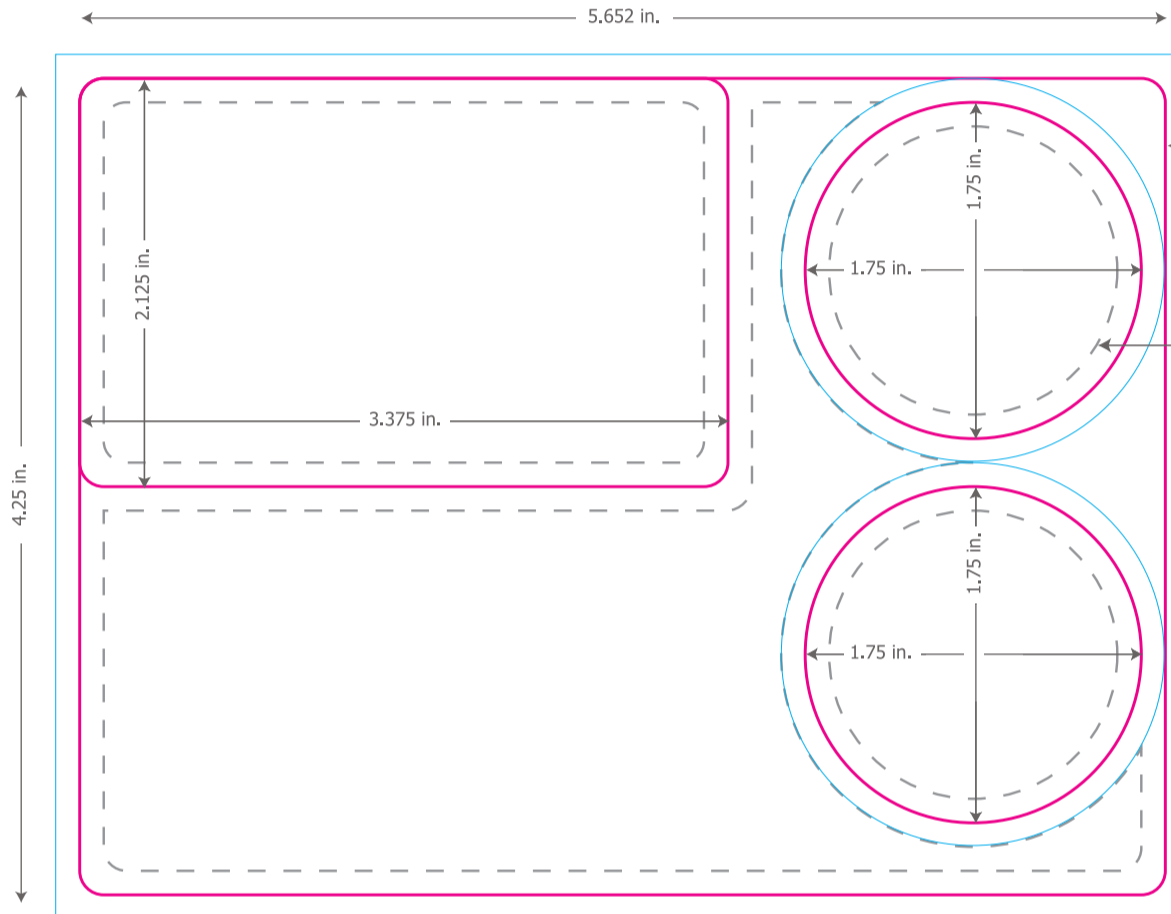




**IMPORTANT INFORMATION BEFORE YOU SEND YOUR ARTWORK TO TELE-PAK:**

1. PLEASE KEEP YOUR ARTWORK IN LAYERS, DO NOT FLATTEN IT.
2. PLEASE **OUTLINE ALL FONTS/TYPE** IN ILLUSTRATOR (OR RASTERIZE THEM IN PHOTOSHOP).
3. IF USING ANY OTHER PROGRAM, PLEASE INCLUDE THE FONT FILES WHEN SENDING IN THE ARTWORK.
4. PLEASE EMBED ALL IMAGES - DO NOT LINK
5. ZIP YOUR FILE(S) AND UPLOAD AT [WWW.MYCARDART.COM](http://WWW.MYCARDART.COM)

**FRONT**



**IMPORTANT!**

If your color or image touches this edge, then you must extend it to the blue line. This applies to all four edges, on both the front and the back.

**IMPORTANT!**

This is a safety area. Please do not let type or anything important go beyond the dotted lines - it runs the risk of being cut off in the diecutting process.

**BACK**

